

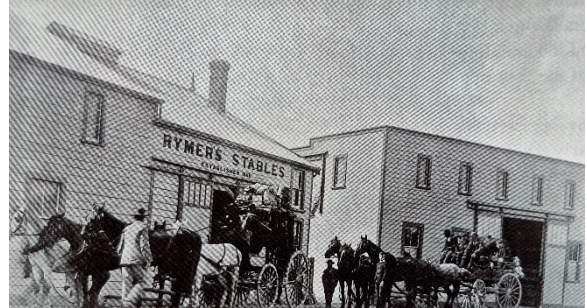
## Taradale Hotel

*(Placemat information flyer at a recent lunch)*

In 1869 the Duke of Edinburgh Hotel, later known as the Taradale Hotel was built by Mr J Anderson.



George Rymer had a coaching service of 100 horses, 40 vehicles and stables with the main stable on the site behind the Taradale Hotel.



The Duke of Edinburgh was renamed the Taradale Hotel and in 1873 a second hotel was built.

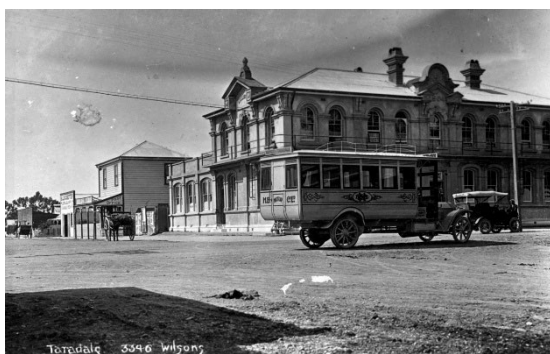


The Redcliffe Bridge was opened on a very wet 11 June 1881, with a bottle of champagne broken on the bridge rail and then the gathering retired to the Taradale Hotel where champagne flowed and numerous toasts were drunk.

In 1881 Martin Ryan was the licensee who transferred the licence to Richard O'Rourke in 1894 as O'Rourke's Taradale Hotel. Richard held the licence until 1899 when it was transferred to Mr Spillane.



When the keg of beer deliveries were made six men were needed on each rope, with many offers of help as they all received a shout after the keg was in the cellar



The Taradale Hotel. Next to the hotel is R M Glenny's store and Post Office. Beside the store is the blacksmith's forge belonging to Charlie Causton. The Hawke's Bay Motor Company's bus is parked in front of the hotel. There is also a horse and cart, as well as a car on the road verges.



A fire destroyed the Taradale Hotel in May 1904. This was the largest fire seen in the district and was thought to have been started by someone smoking in the card room. Mr Glenny's Post Office and residence were also destroyed but the furniture and stock were saved with the only a few letters ready for dispatch lost.



The replacement hotel was immediately erected of brick and cement facing. Two storeys with iron ladder fire escapes from every room upstairs. The hotel had a comfortable commercial room, two private parlours and a 30 seat dining room. Fourteen single and double bedrooms, a bathroom and a lavatory.



In the 1931 earthquake the hotel lost all its outer walls and had to be demolished. Mr E Howard was killed outside the hotel. The hotel was rebuilt in the Art Deco style.



When the hotel was offered for sale, it was purchased by the fast-food chain McDonalds. The intention was to demolish the hotel and rebuild in the usual McDonalds style.

However, the Art Deco Trust Director, Robert McGregor, opposed the move and suggested that the chain retain the building as it had a reputation of successfully using heritage buildings as premises. As a result, on 13 February 1997 the only Art Deco McDonalds opened.



Further Taradale reading: Taradale, The Story of a Village. Janet Gordon & Shirley Spence.